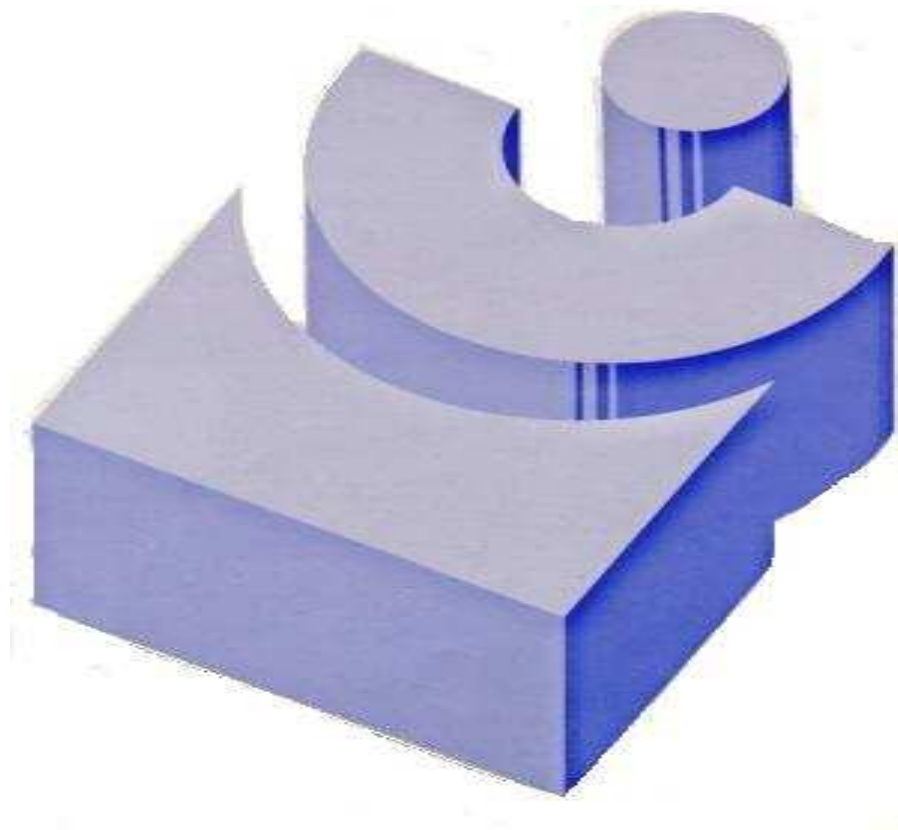


COMER S.n.c

Via Luigi Riva, 10
21013 GALLARATE (VA)
Tel. 0331/776040
Fax 0331/245267
P. Iva: 01526260128

ISO 6020/II



Costruzione Standard secondo norme ISO 6020/II

Pressione di lavoro 160 BAR

Pressione di punta 250 BAR

10 diametri di alesaggio

12 diametri di stelo

12 tipi di fissaggio

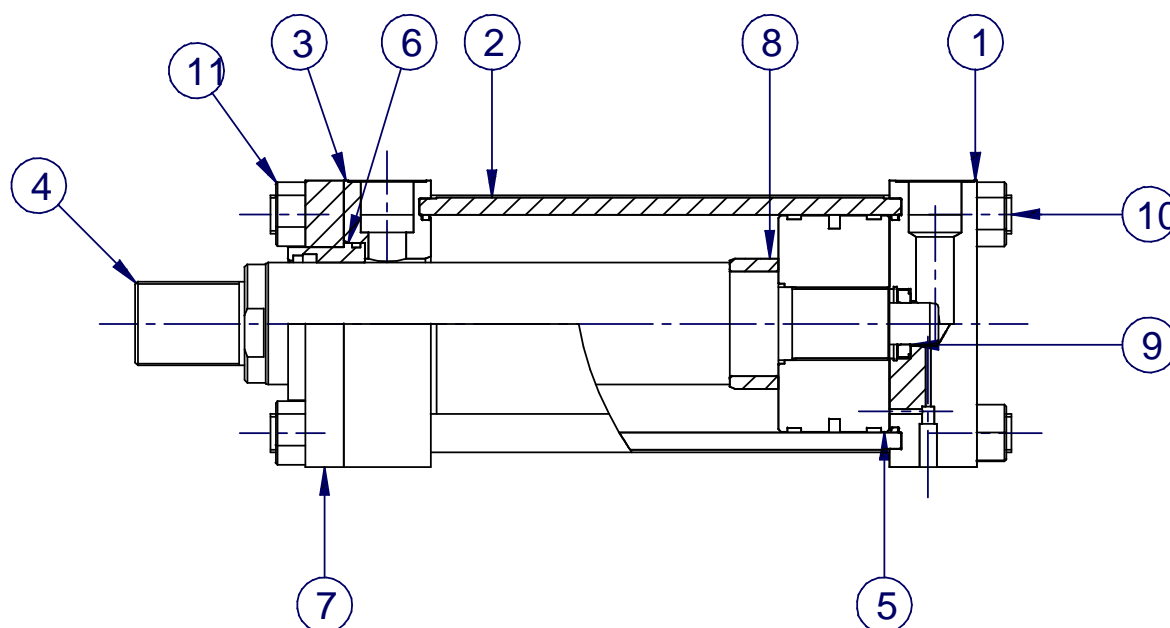
Possibilità di frenatura sulla testa e sul fondo

Corse variabili fino a 4000 mm

Terminale stelo filettato maschio o femmina a scelta

Testa e fondo a forma quadrata

Bocche standard filettate gas cilindrico, a richiesta si possono fornire filettature NPTF o SAE



1 Fondo

2 Canna

3 Testa

4 Stelo

5 Pistone

6 Bussola in bronzo

7 Flangia anteriore

**8 Bussola
ammortizzamento
anteriore**

**9 Bussola
ammortizzamento
posteriore**

10 Tirante

11 Dado



CANNA

È in acciaio di alta qualità trafilata a freddo con valori di resistenza allo snervamento fino a 45 kg/mm².

Le canne internamente sono lappate con grado di rugosità di 0,25 µ.

STELO

Viene costruito in acciaio di alta qualità rettificato e cromato a spessore, con tolleranza sul diametro *f7* e grado di rugosità 0,2 µ, a richiesta possono essere usati materiali speciali.

TESTATE

Vengono realizzate in acciaio con grado di precisione elevato per avere la massima concentricità tra loro, riducendo al minimo gli attriti una volta montate.

PISTONE

Del tipo mono blocco, è in acciaio di qualità. Viene curata particolarmente la concentricità per il buon funzionamento delle guarnizioni.

GUARNIZIONI

Vengono impiegate guarnizioni di ottima qualità in gomma nitrilica (buna N) compatibile con i fluidi che generalmente vengono utilizzati in oleodinamica, limite delle temperature - 10° + 90°C, velocità max 0,6 m/s a richiesta, ed in casi particolari si possono fornire i cilindri con guarnizioni in VITON, in PTFE, oppure con mescole speciali.

FRENATURE

I cilindri possono essere forniti con dispositivo di frenatura sia sulla parte anteriore sia sulla parte posteriore.

Questo si ottiene con dei particolari accorgimenti eseguiti all'interno del cilindro.

LIMITATORE DI CORSA

Viene adottato quando la corsa è particolarmente lunga.

La lunghezza consigliabile è:

50 mm per corse 1000÷1500 mm

100 mm per corse 1500÷2000 mm

150 mm per corse 2000÷2500 mm

Per corse superiori interpellare il ns. ufficio tecnico.

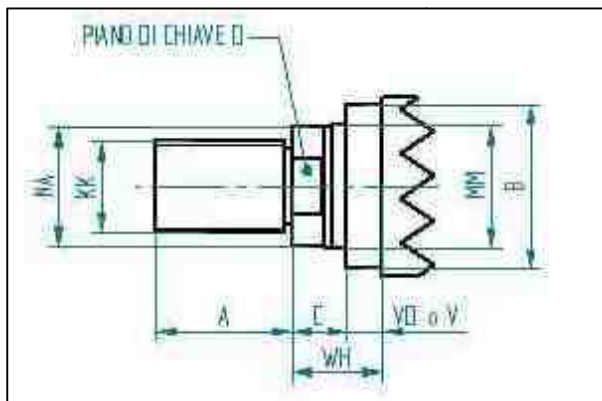
In caso il cilindro lavorasse in tiro, non necessita l'uso di limitatori di corsa.

Scelta della sigla		SERIE IC	Cf	...	Fa	Fp	S
Alesaggio	indicare in mm										
Stelo A	indicare φ stelo										
Filettatura stelo	maschio - femmina Mo F										
Stelo B	indicare solo a richiesta										
Filettatura stelo	maschio - femmina Mo F										
Corsa cilindro	indicare in mm										
Tipo costruttivo	A= tiranti prolungati testa B= tiranti prolungati fondo AB= tiranti prolungati ambo i lati C= flangia quadrata anteriore D= flangia quadrata posteriore E= piedini F= occhio fisso G= forcella posteriore H= snodo sferico I= perni laterali testa L= perni laterali fondo M= perni intermedi										
Distanziale											
Fa = frenatura anteriore											
Fp = frenatura posteriore											
S = Esecuzioni speciali	indicare la variante di standard										

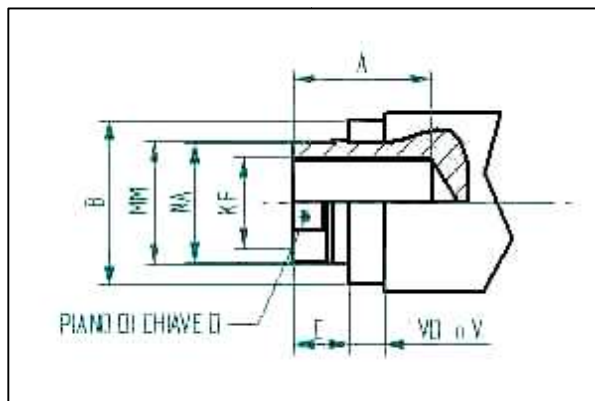


Tipo di filettatura

Filettatura maschio (M)



Filettatura femmina (F)



Particolare terminale stelo

Filettatura speciale:
Qualora si volesse una
filettatura diversa dal catalogo
sulla sigla dopo il numero

dello stelo indicare la S. Il
valore della filettatura
indicato a parte.

Ales. \varnothing	Stelo \varnothing MM	KK	KF*	A	B°	C	D	NA	VD o V	WH
25	12	M10x1,25	M8x1	14,0	24	9,0	10	11	6	15,0
	18	M14x1,5	M12x1,25	18,0	30	9,0	15	17	6	15,0
32	14	M12x1,25	M10x1,25	16,0	26	13,0	12	13	12	25,0
	22	M16x1,5	M16x1,5	22,0	34	13,0	18	21	12	25,0
40	18	M14x1,5	M12x1,25	18,0	30	19,0	15	17	6	25,0
	28	M20x1,5	M20x1,5	28,0	42	13,0	22	26	12	25,0
50	22	M16x1,5	M16x1,5	22,0	34	19,0	18	21	6	25,0
	36	M27x2	M27x2	36,0	50	16,0	30	34	9	25,0
63	28	M20x1,5	M20x1,5	28,0	42	26,0	22	26	6	32,0
	45	M33x2	M33x2	45,0	60	19,0	39	43	13	32,0
80	36	M27x2	M27x2	36,0	50	26,0	30	34	5	31,0
	56	M42x2	M42x2	56,0	72	22,0	48	54	9	31,0
100	45	M33x2	M33x2	45,0	60	28,0	39	43	7	35,0
	70	M48x2	M48x2	63,0	88	25,0	62	68	10	35,0
125	56	M42x2	M42x2	56,0	72	28,0	48	54	7	35,0
	90	M64x3	M64x3	85,0	108	25,0	80	88	10	35,0
160	70	M48x2	M48x2	63,0	88	25,0	62	68	12	37,0
	110	M80x3	M80x3	95,0	133	25,0	100	108	12	37,0
200	90	M64x3	M64x3	85,0	108	25,0	80	88	12	37,0
	140	M100x3	M100x3	112,0	163	25,0	128	138	12	37,0

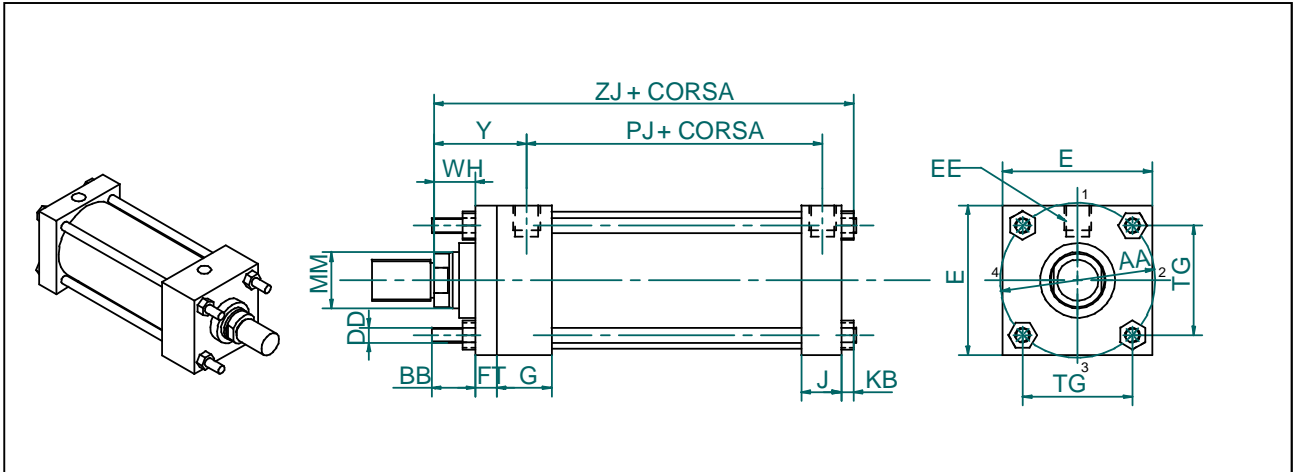
° Tolleranza f_9

* Sui cilindri dal \varnothing 160 non può essere eseguita la filettatura femmina con corsa inferiore a 50 mm.



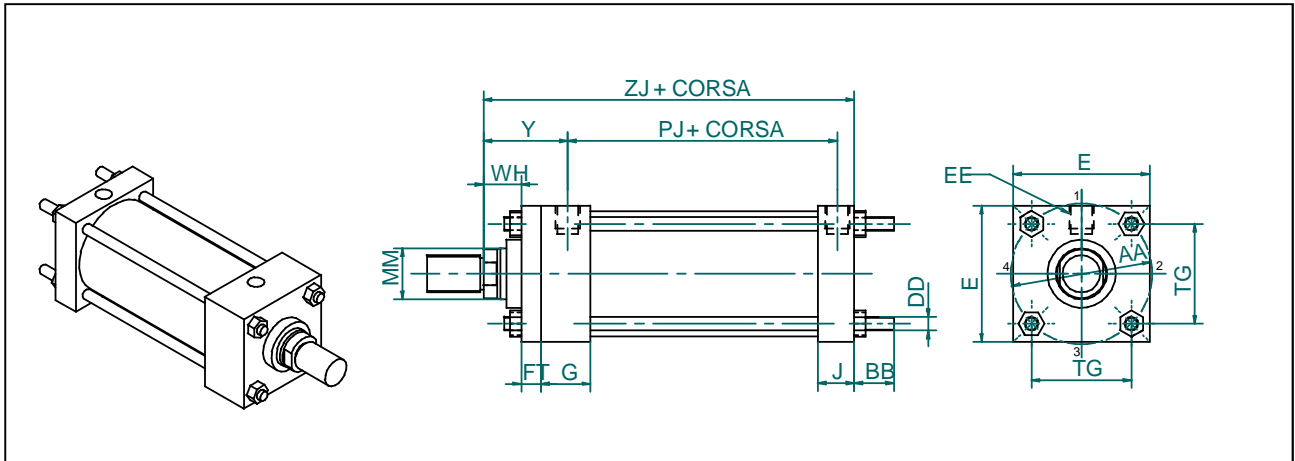
Modello stelo semplice

Tipo "A"



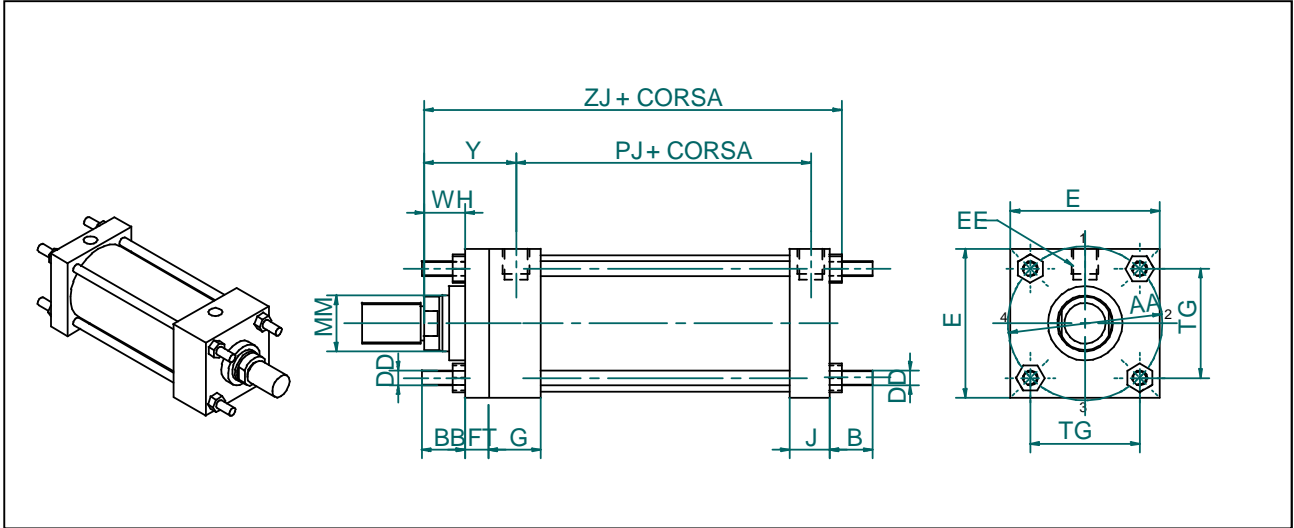
Ales. Ø	Stelo ØMM	AA	BB	DD	E	EEBPS	FT	G	J	KB	TG	WH	Y	Agg. Corsa	
														PJ	ZJ
25	12	40	19	M5	40	1/4"	10	40	25	4	28,3	15	51	52	114
	18	40	19	M5	40	1/4"	10	40	25	4	28,3	15	51	52	114
32	14	47	24	M6	45	1/4"	10	40	25	5	33,2	25	61	56	128
	22	47	24	M6	45	1/4"	10	40	25	5	33,2	25	61	56	128
40	18	59	35	M8x1	65	3/8"	10	45	38	6,5	41,7	25	63	72	153
	28	59	35	M8x1	65	3/8"	10	45	38	6,5	41,7	25	63	72	153
50	22	74	46	M12x1,25	75	1/2"	16	45	38	10	52,3	25	67	74	159
	36	74	46	M12x1,25	75	1/2"	16	45	38	10	52,3	25	67	74	159
63	28	91	46	M12x1,25	90	1/2"	16	45	38	10	64,3	32	71	80	168
	45	91	46	M12x1,25	90	1/2"	16	45	38	10	64,3	32	71	80	168
80	36	117	59	M16x1,5	115	3/4"	20	50	45	13	82,7	31	77	93	190
	56	117	59	M16x1,5	115	3/4"	20	50	45	13	82,7	31	77	93	190
100	45	137	59	M16x1,5	130	3/4"	22	50	45	13	96,9	35	83	100	203
	70	137	59	M16x1,5	130	3/4"	22	50	45	13	96,9	35	83	100	203
125	56	178	81	M22x1,5	165	3/4"	22	50	45	18	125,9	35	83	113	216
	90	178	81	M22x1,5	165	3/4"	22	50	45	18	125,9	35	83	113	216
160	70	219	92	M27x2	203	1"	25	58	58	22	154,9	32	86	130	245
	110	219	92	M27x2	203	1"	25	58	58	22	154,9	32	86	130	245
200	90	269	115	M30x2	240	1 1/4"	25	76	76	24	190,2	32	100	156	299
	140	269	115	M30x2	240	1 1/4"	25	76	76	24	190,2	32	100	156	299

Tipo "B"



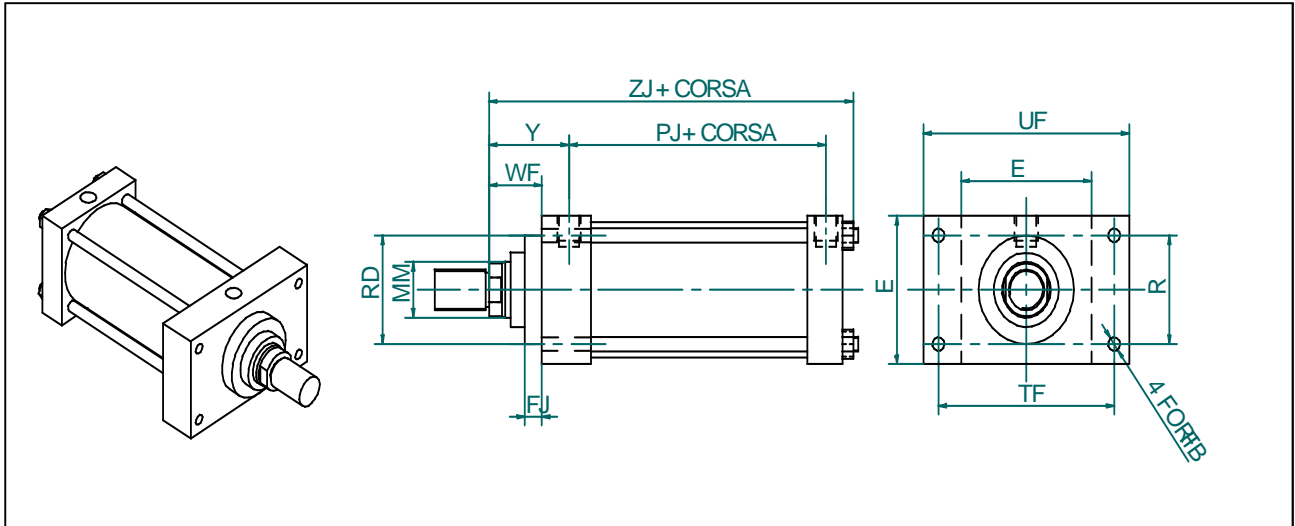
Ales. Ø	Stelo ØMM	AA	BB	DD	E	EEBPS	FT	G	J	KB	TG	WH	Y	Agg. Corsa	
														PJ	ZI
25	12	40	19	M5	40	1/4"	10	40	25	4	28,3	15	51	52	114
	18	40	19	M5	40	1/4"	10	40	25	4	28,3	15	51	52	114
32	14	47	24	M6	45	1/4"	10	40	25	5	33,2	25	61	56	128
	22	47	24	M6	45	1/4"	10	40	25	5	33,2	25	61	56	128
40	18	59	35	M8x1	65	3/8"	10	45	38	6,5	41,7	25	63	72	153
	28	59	35	M8x1	65	3/8"	10	45	38	6,5	41,7	25	63	72	153
50	22	74	46	M12x1,25	75	1/2"	16	45	38	10	52,3	25	67	74	159
	36	74	46	M12x1,25	75	1/2"	16	45	38	10	52,3	25	67	74	159
63	28	91	46	M12x1,25	90	1/2"	16	45	38	10	64,3	32	71	80	168
	45	91	46	M12x1,25	90	1/2"	16	45	38	10	64,3	32	71	80	168
80	36	117	59	M16x1,5	115	3/4"	20	50	45	13	82,7	31	77	93	190
	56	117	59	M16x1,5	115	3/4"	20	50	45	13	82,7	31	77	93	190
100	45	137	59	M16x1,5	130	3/4"	22	50	45	13	96,9	35	83	100	203
	70	137	59	M16x1,5	130	3/4"	22	50	45	13	96,9	35	83	100	203
125	56	178	81	M22x1,5	165	3/4"	22	50	45	18	125,9	35	83	113	216
	90	178	81	M22x1,5	165	3/4"	22	50	45	18	125,9	35	83	113	216
160	70	219	92	M27x2	203	1"	25	58	58	22	154,9	32	86	130	245
	110	219	92	M27x2	203	1"	25	58	58	22	154,9	32	86	130	245
200	90	269	115	M30x2	240	1 1/4"	25	76	76	24	190,2	32	100	156	299
	140	269	115	M30x2	240	1 1/4"	25	76	76	24	190,2	32	100	156	299

Tipo "AB"



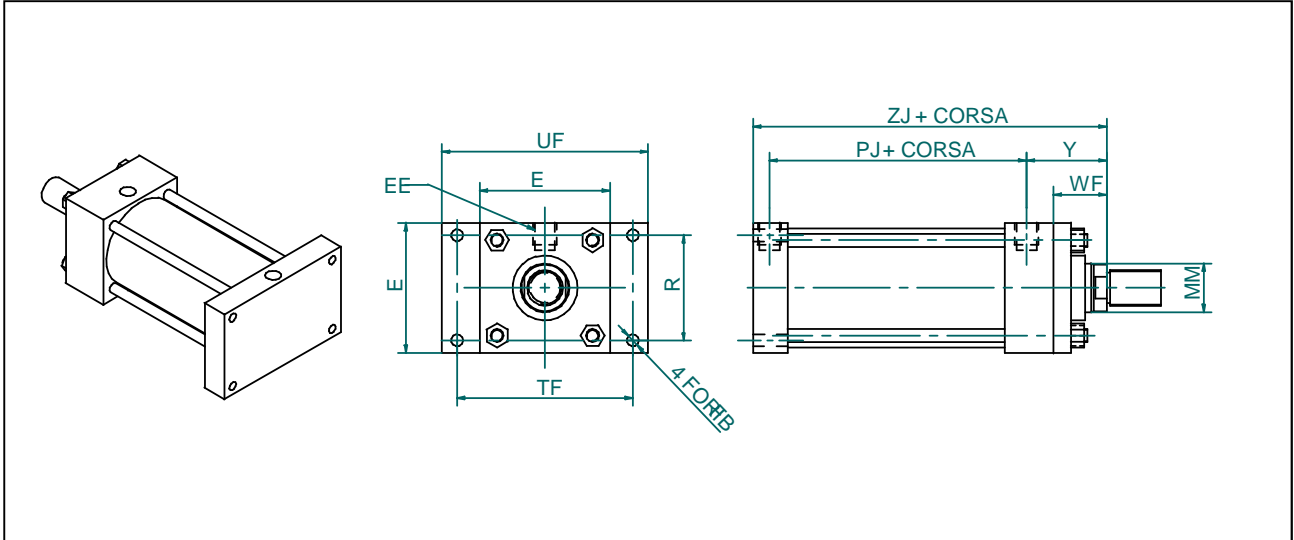
Ales. Ø	Stelo ØMM	AA	BB	DD	E	EEBps	FT	G	J	KB	TG	WH	Y	Agg. Corsa	
														PJ	ZJ
25	12	40	19	M5	40	1/4"	10	40	25	4	28,3	15	51	52	114
	18	40	19	M5	40	1/4"	10	40	25	4	28,3	15	51	52	114
32	14	47	24	M6	45	1/4"	10	40	25	5	33,2	25	61	56	128
	22	47	24	M6	45	1/4"	10	40	25	5	33,2	25	61	56	128
40	18	59	35	M8x1	65	3/8"	10	45	38	6,5	41,7	25	63	72	153
	28	59	35	M8x1	65	3/8"	10	45	38	6,5	41,7	25	63	72	153
50	22	74	46	M12x1,25	75	1/2"	16	45	38	10	52,3	25	67	74	159
	36	74	46	M12x1,25	75	1/2"	16	45	38	10	52,3	25	67	74	159
63	28	91	46	M12x1,25	90	1/2"	16	45	38	10	64,3	32	71	80	168
	45	91	46	M12x1,25	90	1/2"	16	45	38	10	64,3	32	71	80	168
80	36	117	59	M16x1,5	115	3/4"	20	50	45	13	82,7	31	77	93	190
	56	117	59	M16x1,5	115	3/4"	20	50	45	13	82,7	31	77	93	190
100	45	137	59	M16x1,5	130	3/4"	22	50	45	13	96,9	35	83	100	203
	70	137	59	M16x1,5	130	3/4"	22	50	45	13	96,9	35	83	100	203
125	56	178	81	M22x1,5	165	3/4"	22	50	45	18	125,9	35	83	113	216
	90	178	81	M22x1,5	165	3/4"	22	50	45	18	125,9	35	83	113	216
160	70	219	92	M27x2	203	1"	25	58	58	22	154,9	32	86	130	245
	110	219	92	M27x2	203	1"	25	58	58	22	154,9	32	86	130	245
200	90	269	115	M30x2	240	1 1/4"	25	76	76	24	190,2	32	100	156	299
	140	269	115	M30x2	240	1 1/4"	25	76	76	24	190,2	32	100	156	299





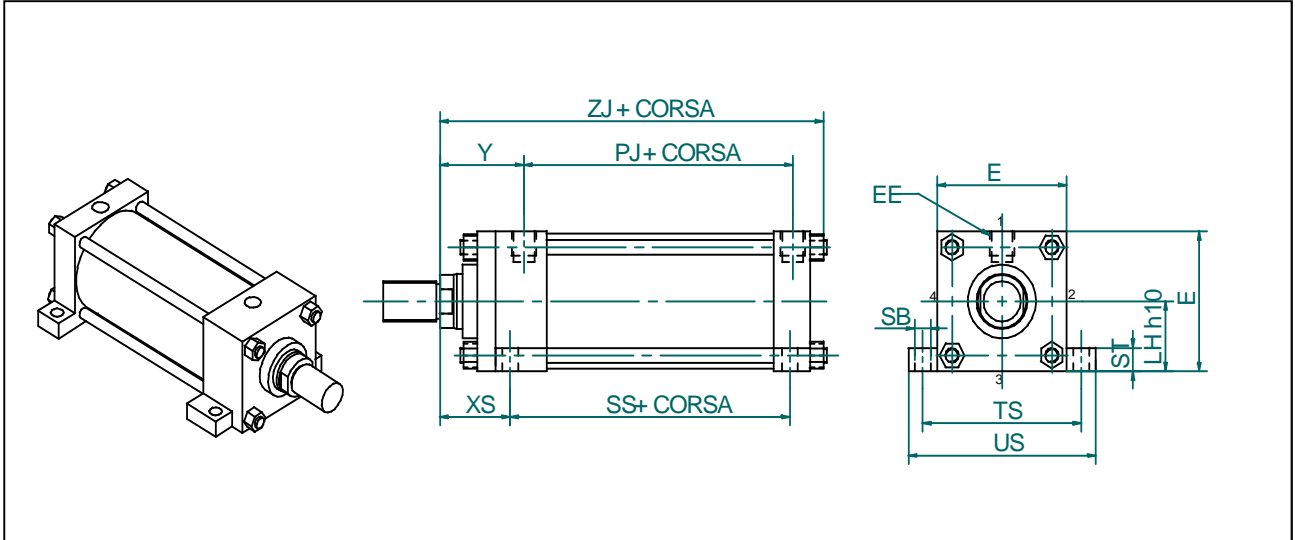
Ales. \varnothing	Stelo $\varnothing MM$	E	EEBPS	FB	FJ	R	RD	TF	UF	WF	Y	Agg. Corsa	
												PJ	ZJ
25	12	40,0	1/4"	5,5	10	27	49	51	64	25	51	52	114
	18	40,0	1/4"	5,5	10	27	49	51	64	25	51	52	114
32	14	45,0	1/4"	6,5	10	33	56	58	70	35	61	56	128
	22	45,0	1/4"	6,5	10	33	56	58	70	35	61	56	128
40	18	65,0	3/8"	11,0	10	41	56	87	110	35	63	72	153
	28	65,0	3/8"	11,0	10	41	69	87	110	35	63	72	153
50	22	75,0	1/2"	13,5	10	52	62	105	130	41	67	74	159
	36	75,0	1/2"	13,5	16	52	75	105	130	41	67	74	159
63	28	90,0	1/2"	13,5	10	65	69	117	142	48	71	80	168
	45	90,0	1/2"	13,5	16	65	88	117	142	48	71	80	168
80	36	115,0	3/4"	17,5	16	83	75	149	180	51	77	93	190
	56	115,0	3/4"	17,5	20	83	105	149	180	51	77	93	190
100	45	130,0	3/4"	17,5	16	97	88	162	190	57	83	100	203
	70	130,0	3/4"	17,5	20	97	125	162	190	57	83	100	203
125	56	165,0	3/4"	21,5	20	126	105	208	250	57	83	113	216
	90	165,0	3/4"	21,5	20	126	150	208	250	57	83	113	216
160	70	203,0	1"	26,0	20	155	125	253	300	57	86	130	245
	110	203,0	1"	26,0	20	155	165	253	300	57	86	130	245
200	90	240,0	1 1/4"	32,0	20	190	150	300	350	57	100	156	299
	140	240,0	1 1/4"	32,0	20	190	210	300	350	57	100	156	299

Tipo "D"



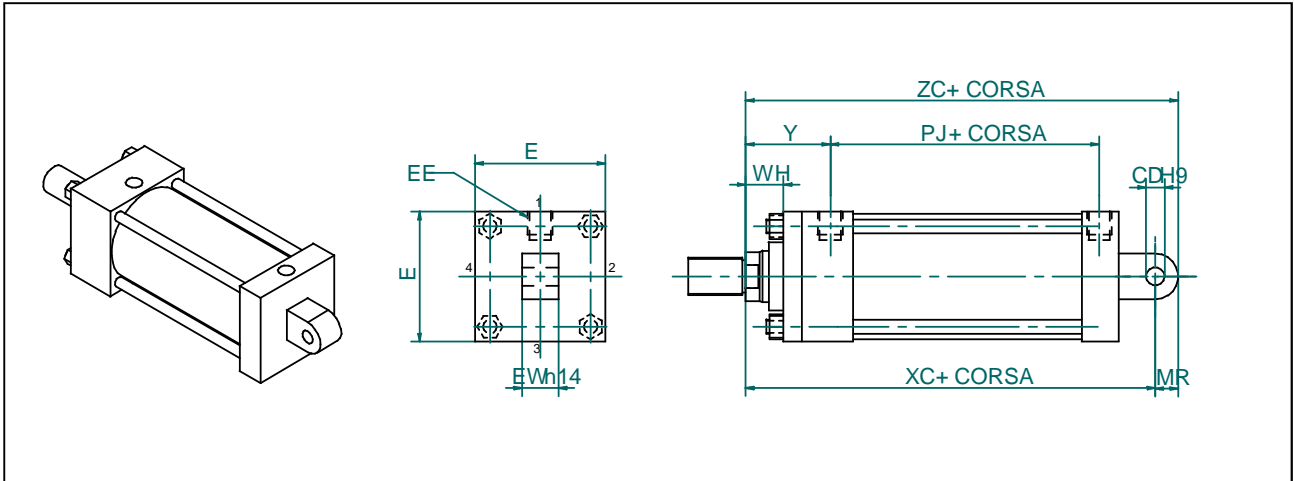
Ales. Ø	Stelo Ø/MM	E	EEBps	FB	R	TF	UF	WF	Y	Agg. Corsa	
										PJ	ZJ
25	12	40,0	1/4"	5,5	27	51	64	25	51	52	114
	18	40,0	1/4"	5,5	27	51	64	25	51	52	114
32	14	45,0	1/4"	6,5	33	58	70	35	61	56	128
	22	45,0	1/4"	6,5	33	58	70	35	61	56	128
40	18	65,0	3/8"	11,0	41	87	110	35	63	72	153
	28	65,0	3/8"	11,0	41	87	110	35	63	72	153
50	22	75,0	1/2"	13,5	52	105	130	41	67	74	159
	36	75,0	1/2"	13,5	52	105	130	41	67	74	159
63	28	90,0	1/2"	13,5	65	117	142	48	71	80	168
	45	90,0	1/2"	13,5	65	117	142	48	71	80	168
80	36	115,0	3/4"	17,5	83	149	180	51	77	93	190
	56	115,0	3/4"	17,5	83	149	180	51	77	93	190
100	45	130,0	3/4"	17,5	97	162	190	57	83	100	203
	70	130,0	3/4"	17,5	97	162	190	57	83	100	203
125	56	165,0	3/4"	21,5	126	208	250	57	83	113	216
	90	165,0	3/4"	21,5	126	208	250	57	83	113	216
160	70	203,0	1"	26,0	155	253	300	57	86	130	245
	110	203,0	1"	26,0	155	253	300	57	86	130	245
200	90	240,0	1 1/4"	32,0	190	300	350	57	100	156	299
	140	240,0	1 1/4"	32,0	190	300	350	57	100	156	299





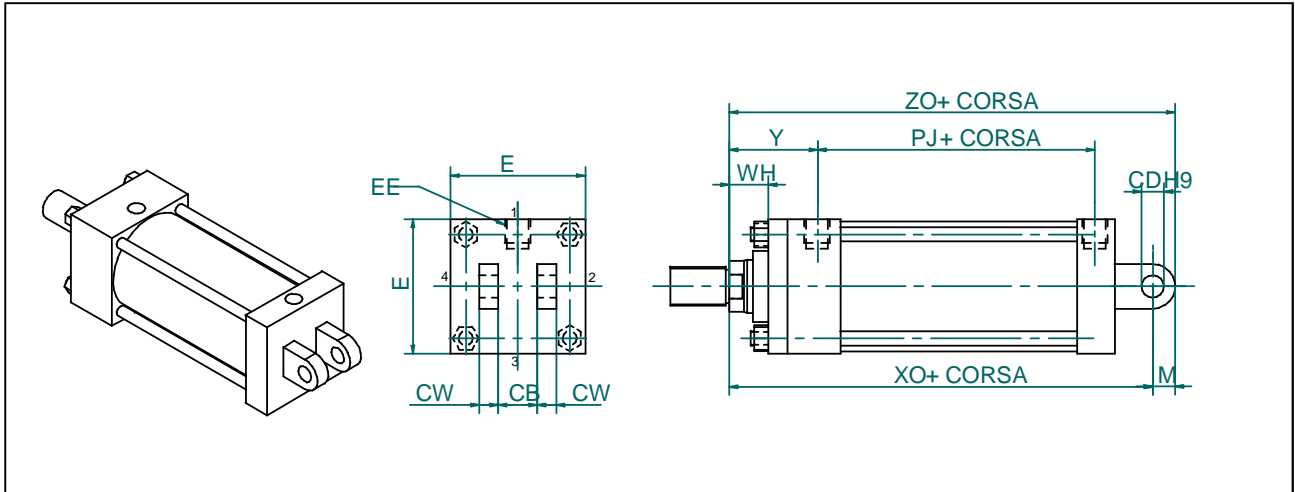
Ales. \varnothing	Stelo \varnothing MM	E	EEBPS	LH	SB	ST	TS	US	XS	Y	Agg. Corsa		
											PJ	SS	ZJ
25	12	40,0	1/4"	19,0	6,6	8,5	54	72	33	51	52	73	114
	18	40,0	1/4"	19,0	6,6	8,5	54	72	33	51	52	73	114
32	14	45,0	1/4"	22,0	9	12,5	63	84	45	61	56	73	128
	22	45,0	1/4"	22,0	9	12,5	63	84	45	61	56	73	128
40	18	65,0	3/8"	31,0	11	12,5	83	103	45	63	72	98	153
	28	65,0	3/8"	31,0	11	12,5	83	103	45	63	72	98	153
50	22	75,0	1/2"	38,0	14	19	102	127	54	67	74	92	159
	36	75,0	1/2"	38,0	14	19	102	127	54	67	74	92	159
63	28	90,0	1/2"	44,0	20	26	124	161	65	71	80	86	168
	45	90,0	1/2"	44,0	20	26	124	161	65	71	80	86	168
80	36	115,0	3/4"	57,0	20	26	149	186	68	77	93	105	190
	56	115,0	3/4"	57,0	20	26	149	186	68	77	93	105	190
100	45	130,0	3/4"	63,0	26	32	172	216	79	83	100	102	203
	70	130,0	3/4"	63,0	26	32	172	216	79	83	100	102	203
125	56	165,0	3/4"	82,0	26	32	210	254	79	83	113	115	216
	90	165,0	3/4"	82,0	26	32	210	254	79	83	113	115	216
160	70	203,0	1"	101,0	33	38	260	318	86	86	130	130	245
	110	203,0	1"	101,0	33	38	260	318	86	86	130	130	245
200	90	240,0	1 1/4"	120,0	39	44	311	381	92	100	156	172	299
	140	240,0	1 1/4"	120,0	39	44	311	381	92	100	156	172	299

Tipo "F"



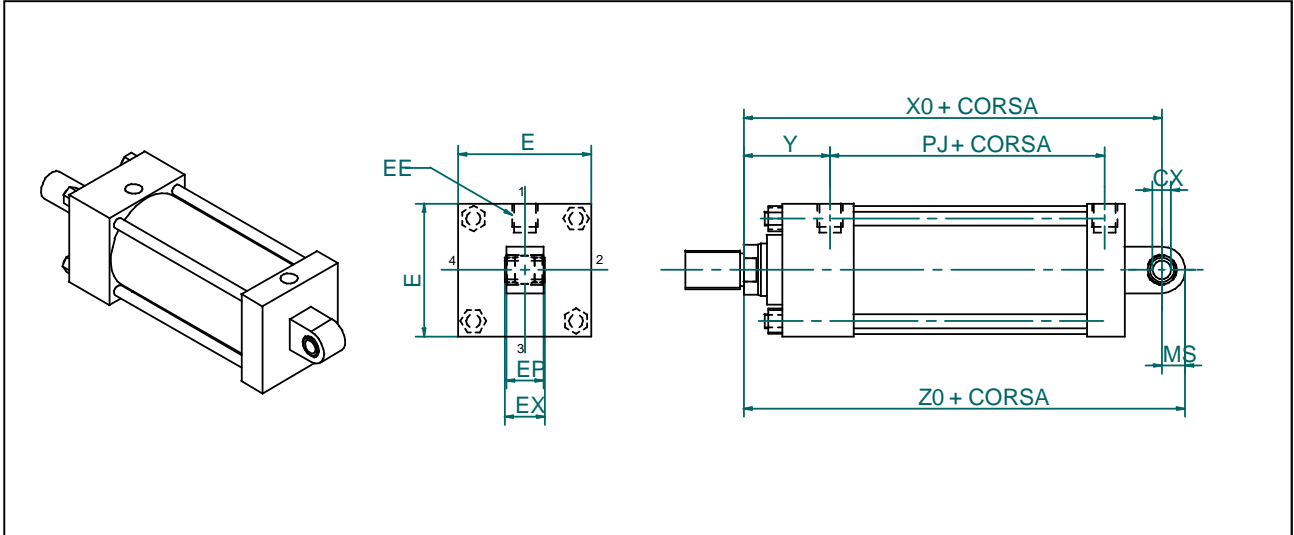
Ales. Ø	Stelo ØMM	E	EEBPS	CD	EW	MR	Y	Agg. Corsa		
								PJ	XC	ZI
25	12	40,0	1/4"	10,0	12	12	51	52	127	137
	18	40,0	1/4"	10,0	12	12	51	52	127	137
32	14	45,0	1/4"	12,0	16	15	61	56	147	159
	22	45,0	1/4"	12,0	16	15	61	56	147	159
40	18	65,0	3/8"	14,0	20	16	63	72	172	186
	28	65,0	3/8"	14,0	20	16	63	72	172	186
50	22	75,0	1/2"	20,0	30	25	67	74	191	211
	36	75,0	1/2"	20,0	30	25	67	74	191	211
63	28	90,0	1/2"	20,0	30	25	71	80	200	220
	45	90,0	1/2"	20,0	30	25	71	80	200	220
80	36	115,0	3/4"	28,0	40	34	77	93	229	257
	56	115,0	3/4"	28,0	40	34	77	93	229	257
100	45	130,0	3/4"	36,0	50	44	83	100	257	293
	70	130,0	3/4"	36,0	50	44	83	100	257	293
125	56	165,0	3/4"	45,0	60	53	83	113	273	318
	90	165,0	3/4"	45,0	60	53	83	113	273	318
160	70	203,0	1"	56,0	70	59	86	130	308	367
	110	203,0	1"	56,0	70	59	86	130	308	367
200	90	240,0	1 1/4"	70,0	80	76	100	156	381	451
	140	240,0	1 1/4"	70,0	80	76	100	156	381	451





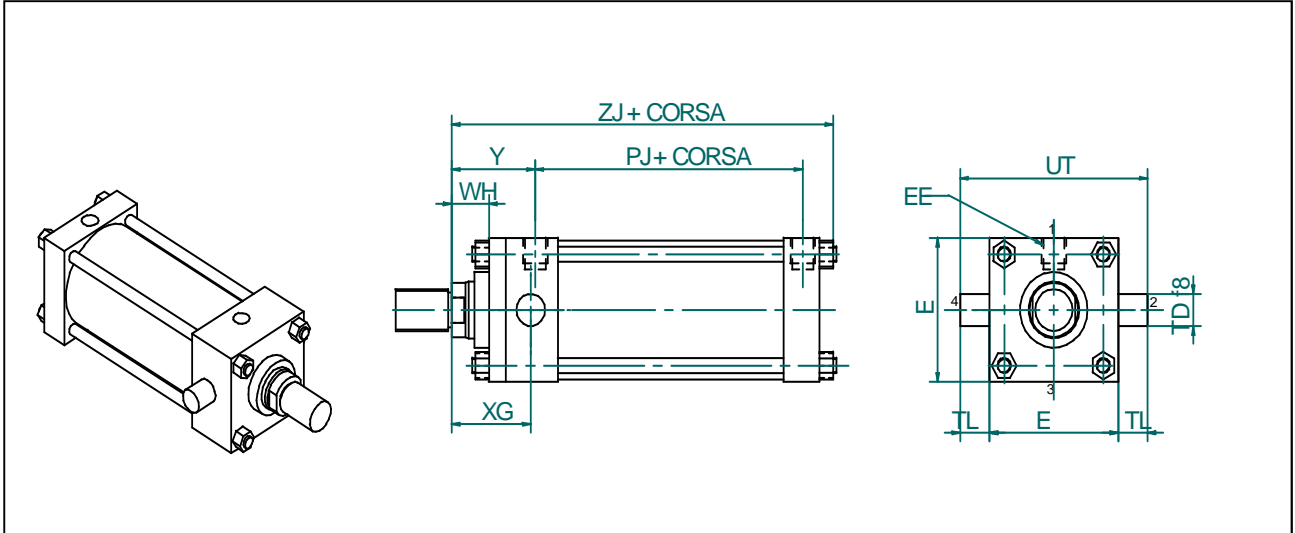
Ales. Ø	Stelo ØMM	E	EEBPS	CB	CD	CW	MR	Y	Agg. Corsa		
									PJ	XC	ZC
25	12	40,0	1/4"	12,0	10	6	12	51	52	127	137
	18	40,0	1/4"	12,0	10	6	12	51	52	127	137
32	14	45,0	1/4"	16,0	12	8	15	61	56	147	159
	22	45,0	1/4"	16,0	12	8	15	61	56	147	159
40	18	65,0	3/8"	20,0	14	10	16	63	72	172	186
	28	65,0	3/8"	20,0	14	10	16	63	72	172	186
50	22	75,0	1/2"	30,0	20	15	25	67	74	191	211
	36	75,0	1/2"	30,0	20	15	25	67	74	191	211
63	28	90,0	1/2"	30,0	20	15	25	71	80	200	220
	45	90,0	1/2"	30,0	20	15	25	71	80	200	220
80	36	115,0	3/4"	40,0	28	20	34	77	93	229	257
	56	115,0	3/4"	40,0	28	20	34	77	93	229	257
100	45	130,0	3/4"	50,0	36	25	44	83	100	257	293
	70	130,0	3/4"	50,0	36	25	44	83	100	257	293
125	56	165,0	3/4"	60,0	45	30	53	83	113	273	318
	90	165,0	3/4"	60,0	45	30	53	83	113	273	318
160	70	203,0	1"	70,0	56	35	59	86	130	308	367
	110	203,0	1"	70,0	56	35	59	86	130	308	367
200	90	240,0	1 1/4"	80,0	70	40	76	100	156	381	451
	140	240,0	1 1/4"	80,0	70	40	76	100	156	381	451

Tipo "H"



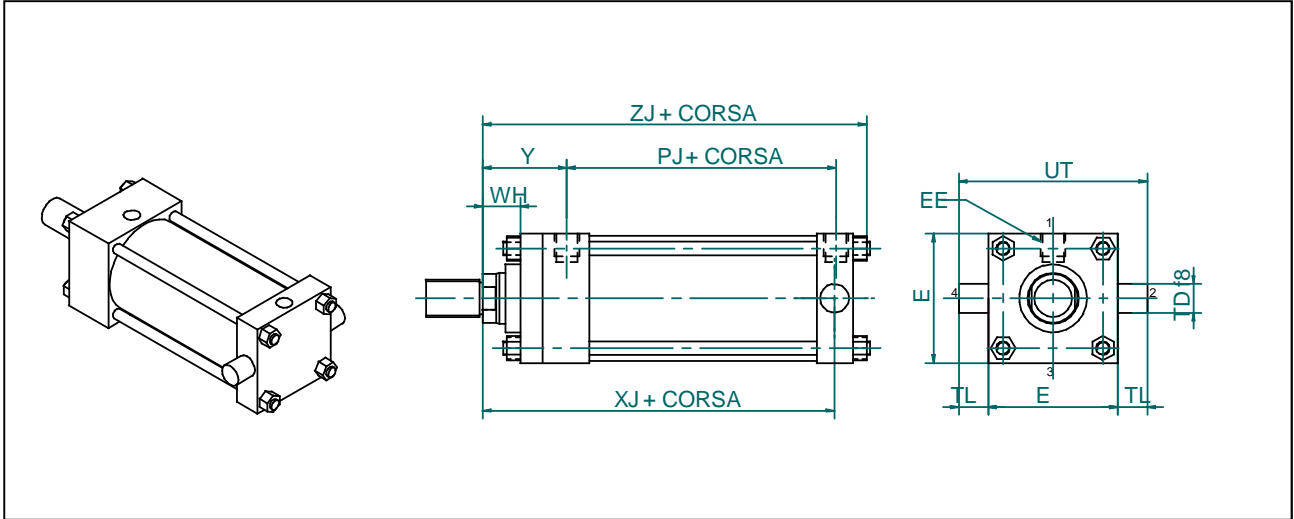
Ales. Ø	Stelo ØMM	E	EEBPS	CX	EP	EX	MS	Y	Agg. Corsa		
									PJ	X0	Z0
25	12	40,0	1/4"	10,0	6	9	20	51	52	127	143
	18	40,0	1/4"	10,0	6	9	20	51	52	127	143
32	14	45,0	1/4"	12,0	7	10	23	61	56	147	167
	22	45,0	1/4"	12,0	7	10	23	61	56	147	167
40	18	65,0	3/8"	17,0	10	14	29	63	72	175	198
	28	65,0	3/8"	17,0	10	14	29	63	72	175	198
50	22	75,0	1/2"	20,0	12	16	32	67	74	191	221
	36	75,0	1/2"	20,0	12	16	32	67	74	191	221
63	28	90,0	1/2"	25,0	16	20	45	71	80	204	239
	45	90,0	1/2"	25,0	16	20	45	71	80	204	239
80	36	115,0	3/4"	30,0	18	22	53	77	93	229	270
	56	115,0	3/4"	30,0	18	22	53	77	93	229	270
100	45	130,0	3/4"	40,0	22	28	74	83	100	261	316
	70	130,0	3/4"	40,0	22	28	74	83	100	261	316
125	56	165,0	3/4"	50,0	28	35	86	83	113	278	343
	90	165,0	3/4"	50,0	28	35	86	83	113	278	343
160	70	203,0	1"	60,0	36	44	100	86	130	308	393
	110	203,0	1"	60,0	36	44	100	86	130	308	393
200	90	240,0	1 1/4"	80,0	45	55	111	100	156	381	492
	140	240,0	1 1/4"	80,0	45	55	111	100	156	381	492





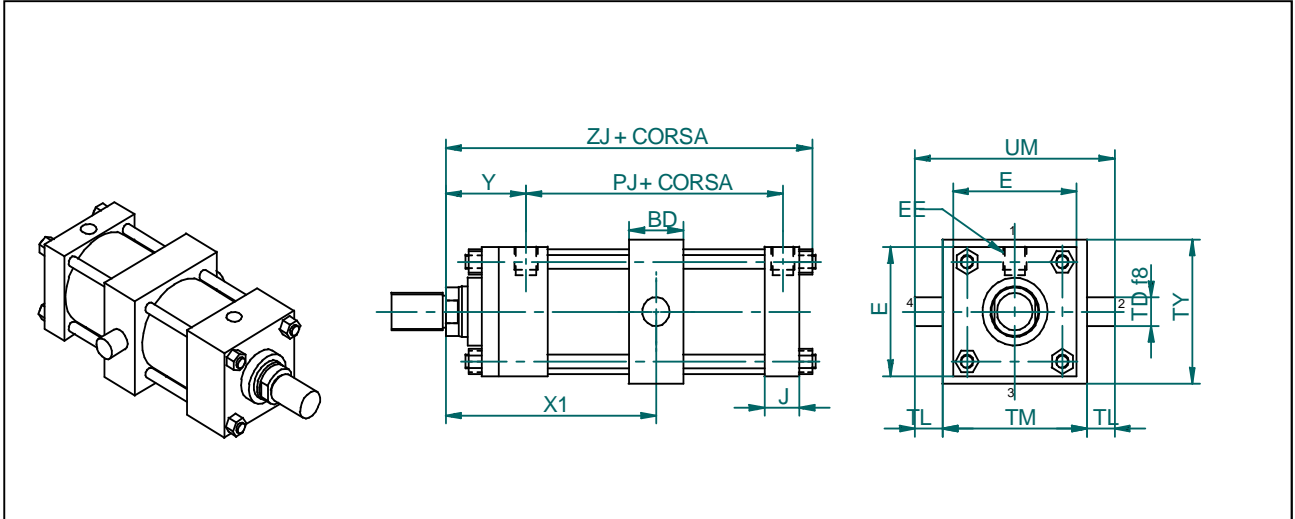
Ales. Ø	Stelo ØMM	E	EEBPS	TC	TD	TL	UT	XG	Y	Agg. Corsa	
										PJ	ZJ
25	12	40,0	1/4"	38,0	12	12	62	44	51	52	114
	18	40,0	1/4"	38,0	12	12	62	44	51	52	114
32	14	45,0	1/4"	44,0	16	16	76	54	61	56	128
	22	45,0	1/4"	44,0	16	16	76	54	61	56	128
40	18	65,0	3/8"	63,0	25	25	113	57	63	72	153
	28	65,0	3/8"	63,0	25	25	113	57	63	72	153
50	22	75,0	1/2"	75,0	32	32,5	140	64	67	74	159
	36	75,0	1/2"	75,0	32	32,5	140	64	67	74	159
63	28	90,0	1/2"	89,0	32	32	153	70	71	80	168
	45	90,0	1/2"	89,0	32	32	153	70	71	80	168
80	36	115,0	3/4"	114,0	36	36	186	76	77	93	190
	56	115,0	3/4"	114,0	36	36	186	76	77	93	190
100	45	130,0	3/4"	127,0	40	40	207	83	83	100	203
	70	130,0	3/4"	127,0	40	40	207	83	83	100	203
125	56	165,0	3/4"	165,0	42	42	249	83	83	113	216
	90	165,0	3/4"	165,0	42	42	249	83	83	113	216
160	70	203,0	1"	203,0	56	56	315	86	86	130	245
	110	203,0	1"	203,0	56	56	315	86	86	130	245
200	90	240,0	1 1/4"	241,0	75	75	391	100	100	156	299
	140	240,0	1 1/4"	241,0	75	75	391	100	100	156	299

Tipo "L"



Ales. Ø	Stelo ØMM	E	EEBPS	TC	TD	TL	UT	Y	Agg. Corsa		
									PJ	XJ	ZJ
25	12	40,0	1/4"	38,0	12	12	62	51	52	101	114
	18	40,0	1/4"	38,0	12	12	62	51	52	101	114
32	14	45,0	1/4"	44,0	16	16	76	61	56	115	128
	22	45,0	1/4"	44,0	16	16	76	61	56	115	128
40	18	65,0	3/8"	63,0	25	25	113	63	72	134	153
	28	65,0	3/8"	63,0	25	25	113	63	72	134	153
50	22	75,0	1/2"	75,0	32	32,5	140	67	74	140	159
	36	75,0	1/2"	75,0	32	32,5	140	67	74	140	159
63	28	90,0	1/2"	89,0	32	32	153	71	80	149	168
	45	90,0	1/2"	89,0	32	32	153	71	80	149	168
80	36	115,0	3/4"	114,0	36	36	186	77	93	168	190
	56	115,0	3/4"	114,0	36	36	186	77	93	168	190
100	45	130,0	3/4"	127,0	40	40	207	83	100	181	203
	70	130,0	3/4"	127,0	40	40	207	83	100	181	203
125	56	165,0	3/4"	165,0	42	42	249	83	113	194	216
	90	165,0	3/4"	165,0	42	42	249	83	113	194	216
160	70	203,0	1"	203,0	56	56	315	86	130	216	245
	110	203,0	1"	203,0	56	56	315	86	130	216	245
200	90	240,0	1 1/4"	241,0	75	75	391	100	156	261	299
	140	240,0	1 1/4"	241,0	75	75	391	100	156	261	299

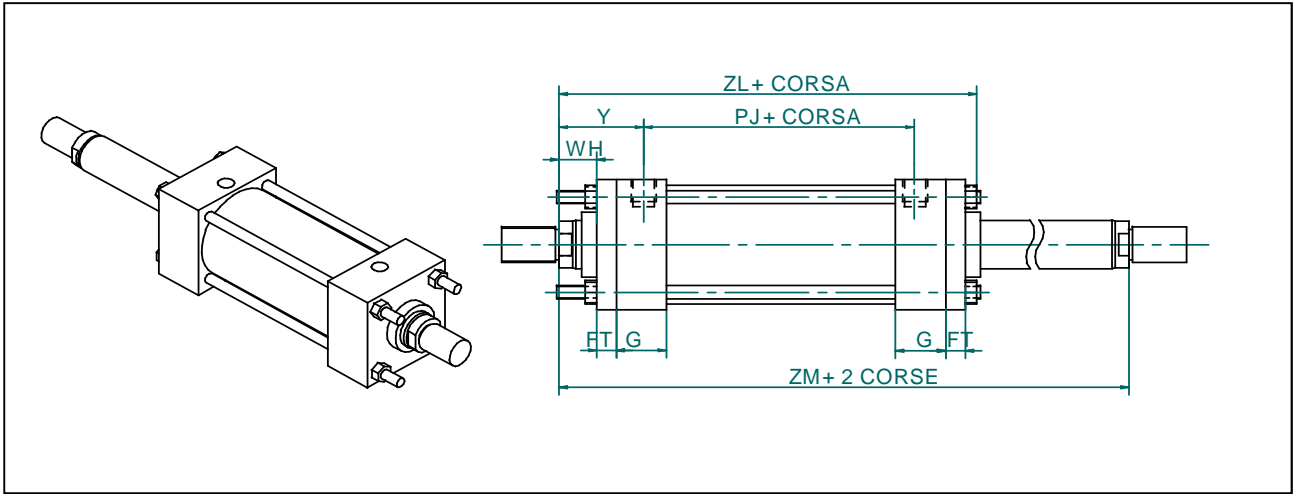




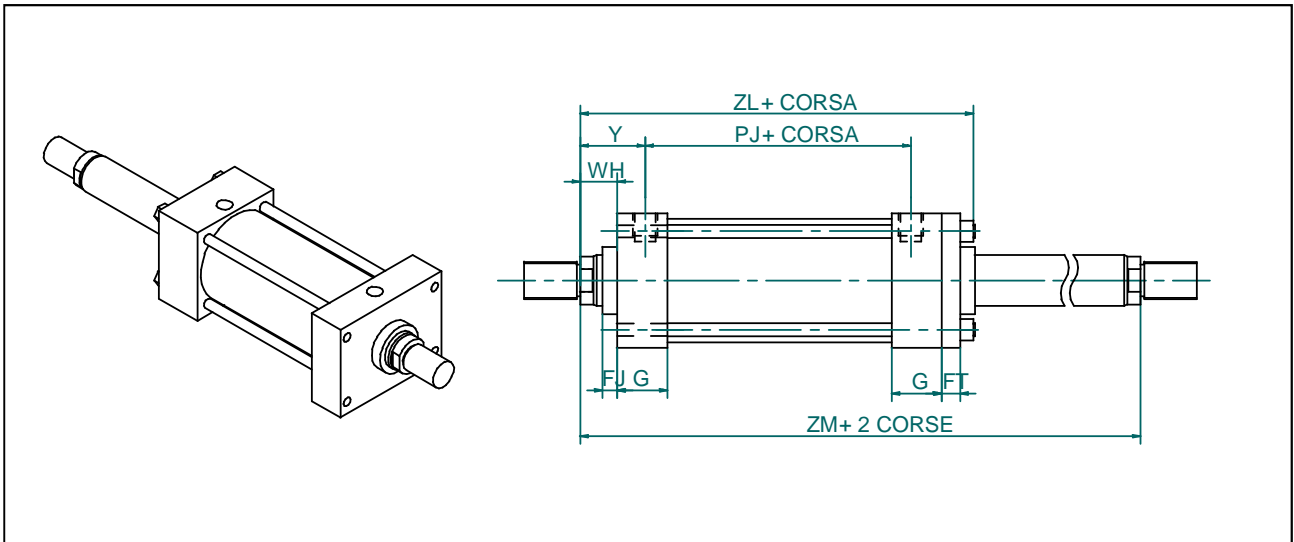
Ales. Ø	Stelo ØMM	E	EEBps	BD	TD	TL	TM	TY	UM	UW	Y	Agg. Corsa		DIM. MIN. x1	CORSA MIN.
												PJ	ZJ		
25	12	40,0	1/4"	25,0	12	12	48	40	72	60	51	52	114	80	3
	18	40,0	1/4"	25,0	12	12	48	40	72	60	51	52	114	80	3
32	14	45,0	1/4"	25,0	16	16	55	45	87	65	61	56	128	90	-
	22	45,0	1/4"	25,0	16	16	55	45	87	65	61	56	128	90	-
40	18	65,0	3/8"	30,0	25	25	76	56	126	80	63	72	153	97	-
	28	65,0	3/8"	30,0	25	25	76	56	126	80	63	72	153	97	-
50	22	75,0	1/2"	40,0	32	32	89	74	153	110	67	74	159	107	7
	36	75,0	1/2"	40,0	32	32	89	74	153	110	67	74	159	107	7
63	28	90,0	1/2"	40,0	32	32	100	86	164	122	71	80	168	114	5
	45	90,0	1/2"	40,0	32	32	100	86	164	122	71	80	168	114	5
80	36	115,0	3/4"	50,0	36	36	127	114	199	154	77	93	190	126	8
	56	115,0	3/4"	50,0	36	36	127	114	199	154	77	93	190	126	8
100	45	130,0	3/4"	50,0	40	40	140	126	220	166	83	100	203	133	-
	70	130,0	3/4"	50,0	40	40	140	126	220	166	83	100	203	133	-
125	56	165,0	3/4"	50,0	42	42	178	164	262	204	83	113	216	133	-
	90	165,0	3/4"	50,0	42	42	178	164	262	204	83	113	216	133	-
160	70	203,0	1"	76,0	56	56	215	196	327	260	86	130	245	154	6
	110	203,0	1"	76,0	56	56	215	196	327	260	86	130	245	154	6
200	90	240,0	1 1/4"	90,0	75	75	279	250	429	330	100	156	299	180	3
	140	240,0	1 1/4"	90,0	75	75	279	250	429	330	100	156	299	180	3

Modello stelo passante

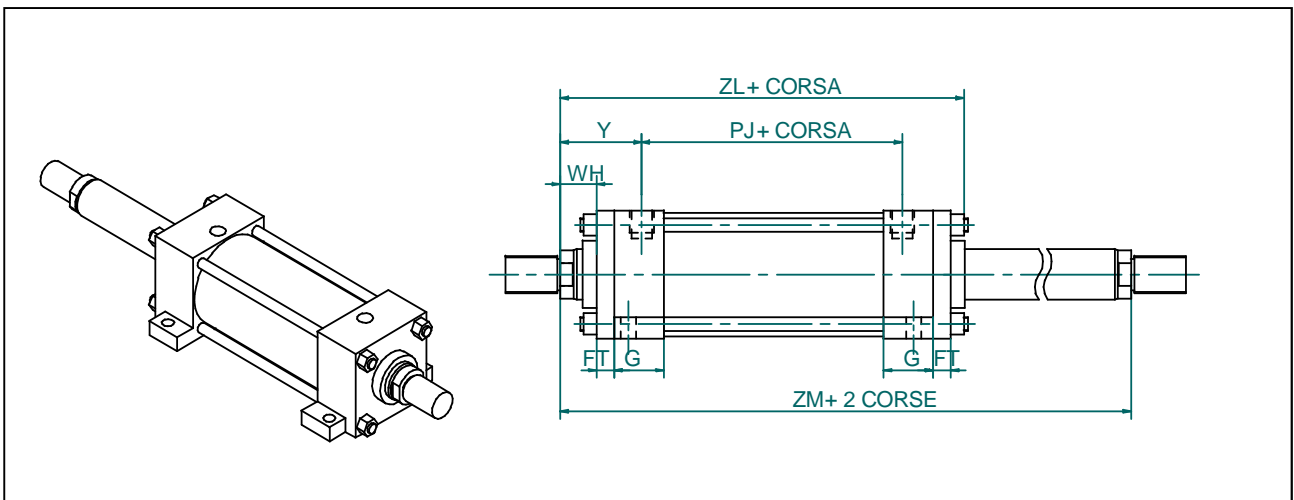
Tipo "A" doppio stelo



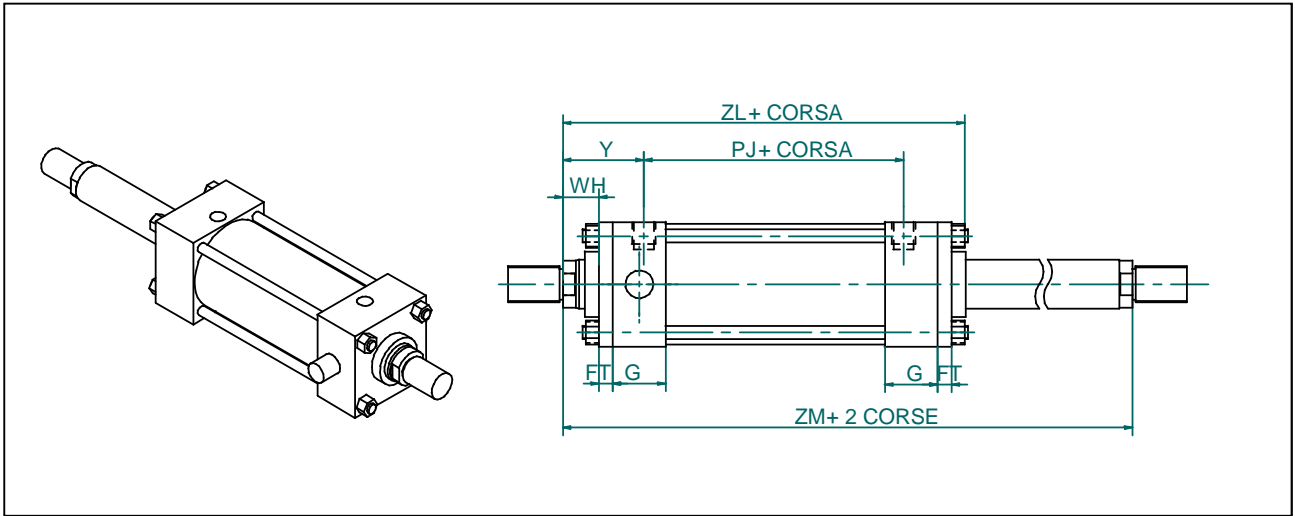
Tipo "C" doppio stelo



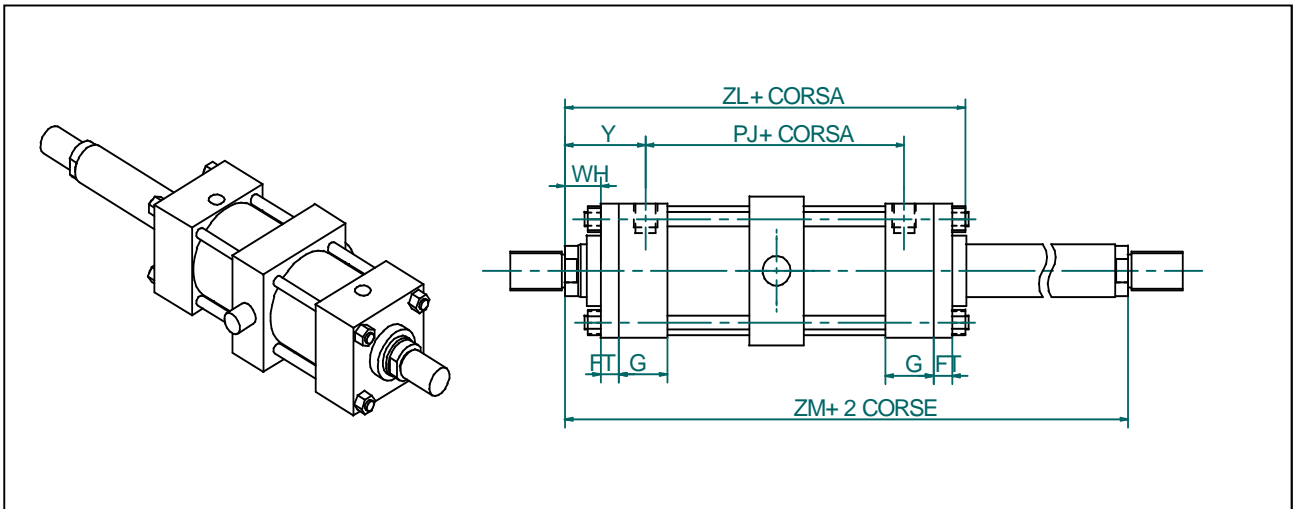
Tipo "E" doppio stelo



Tipo "I" doppio stelo



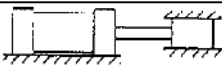
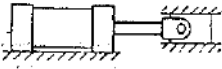

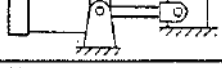


Tipo "M" doppio stelo



Ales. Ø	Stelo ØMM	WH	Y	Agg. Corsa		Agg. 2 corsa
				PJ	ZL	ZM
25	12	15	51	104	144	206
	18	15	51	104	144	206
32	14	25	61	114	155	236
	22	25	61	114	155	236
40	18	25	63	132	176,5	258
	28	25	63	132	176,5	258
50	22	25	67	140	192	274
	36	25	67	140	192	274
63	28	32	71	150	199	292
	45	32	71	150	199	292
80	36	31	77	169	228	323
	56	31	77	169	228	323
100	45	35	83	182	243	348
	70	35	83	182	243	348
125	56	35	83	195	261	361
	90	35	83	195	261	361
160	70	32	86	216	292	388
	110	32	86	216	292	388
200	90	32	100	256	348	456
	140	32	100	256	348	456

Selezione diametro stelo

Quando il cilindro lavora in spinta è necessario verificare che non sia soggetto a carico di punta eccessivo. Per la verifica si procede determinando la costante k relativa alla configurazione del cilindro nella tabella seguente:

		k
I		0,50
II		0,70
III		2,00
IV		1,00
V		1,50
VI		2,00

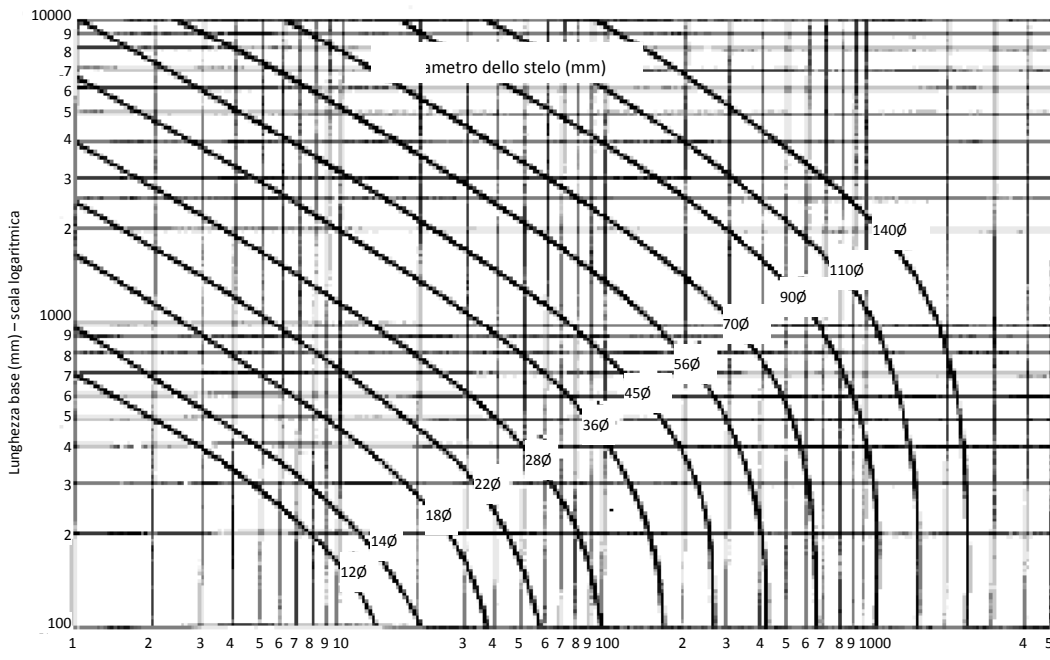
Si determina la lunghezza L:

$$L = k * CORSA$$

Si determina il carico di spinta complessivo esercitato, moltiplicando la superficie di alesaggio per la pressione di lavoro.

Interpolando L con il carico di spinta individuato, è possibile definire il punto di funzionamento dal grafico seguente:

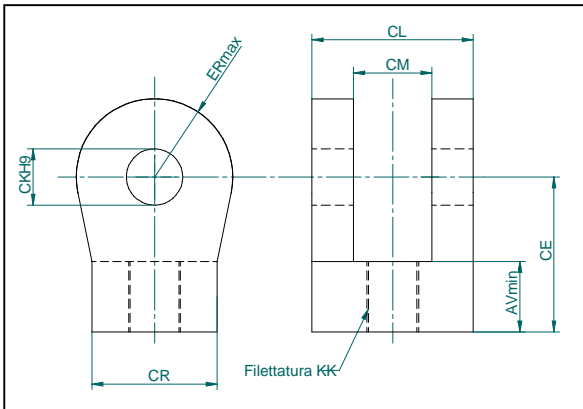




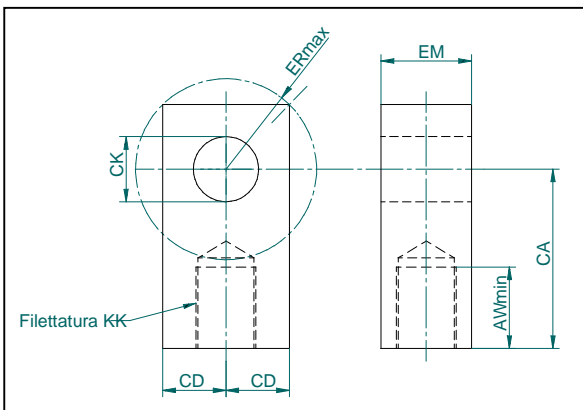
Lunghezza
raccomandata
per il tubo limitatore
di corsa (mm)



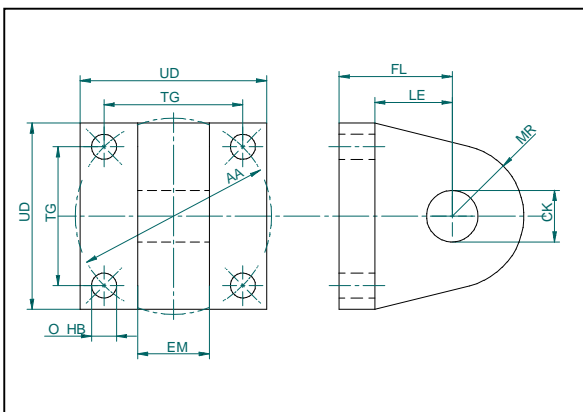
Scegliere il diametro dello stelo rappresentato al di sopra del punto individuato.



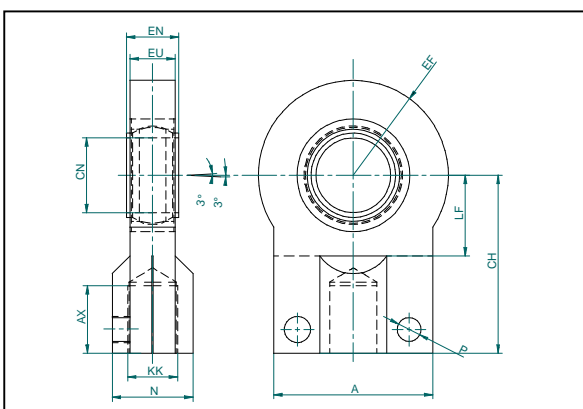
FORCELLA										
Part.Nb	F12	F14	F18	F22	F28	F36	F45	F56	F70	F90
AV	14	16	18	22	28	36	45	56	63	85
CE	32	36	38	54	60	75	99	113	126	168
CK	10	12	14	20	20	28	36	45	56	70
CL	24	32	40	60	60	83	103	123	143	163
CM	12	16	20	30	30	40	50	60	70	80
ER	12	17	17	29	29	34	50	53	59	78
KK	M10x1,25	M12x1,25	M14x1,5	M16x1,5	M20x1,5	M27x2	M33x2	M42x2	M48x2	M64x2
CR	20	32	30	50	50	60	80	102	112	146



OCCHIO ROSSO										
Part.Nb	OF12	OF14	OF18	OF22	OF28	OF36	OF45	OF56	OF70	OF90
AW	14	16	18	22	28	36	45	56	63	85
CA	32	36	38	54	60	75	99	113	126	168
CK	10	12	14	20	20	28	36	45	56	70
EM	12	16	20	30	30	40	50	60	70	80
KK	M10x1,25	M12x1,25	M14x1,5	M16x1,5	M20x1,5	M27x2	M33x2	M42x2	M48x2	M64x2
ER	12	17	17	29	29	34	50	53	59	78
CD	18	22	20	30	30	40	50	65	90	110

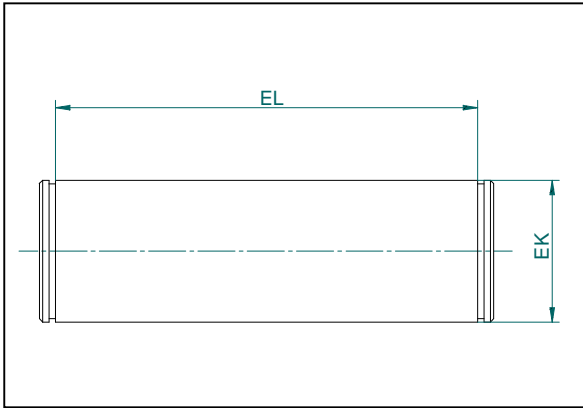


FLANGIA DI ATTACCO										
Part.Nb	FLA12	FLA14	FLA18	FLA22	FLA28	FLA36	FLA45	FLA56	FLA70	FLA90
CK	10	12	14	20	20	28	36	45	56	70
EM	12	16	20	30	30	40	50	60	70	80
FL	23	29	29	48	48	59	79	87	103	132
MRmax	12	17	17	29	29	34	50	53	59	78
LEmin	13	19	19	32	32	39	54	57	63	82
AA	40	47	59	74	91	117	137	178	219	269
HB	5,5	6,6	9	13,5	13,5	17,5	17,5	26	30	33
TG	28,3	33,2	41,7	52,3	64,3	82,7	96,9	125,9	125,9	190,2
UD	40	45	65	75	90	115	130	165	165	240



SNODO SFERICO ISO 8133										
Part.Nb	SS12	SS14	SS18	SS22	SS28	SS36	SS45	SS56	SS70	SS90
A	40	45	55	62	80	90	105	134	156	190
AX	15	17	19	23	29	37	46	57	64	86
CH	42	48	58	68	85	105	130	150	185	240
CN	12-0,008	16-0,008	20-0,012	25-0,012	30-0,012	40-0,012	50-0,012	60-0,015	80-0,015	100-0,020
EFmax	20	22,5	27,5	32,5	40	50	62,5	80	102,5	120
EN	10-0,12	14-0,12	16-0,12	20-0,12	22-0,12	28-0,12	35-0,12	44-0,15	55-0,15	70-0,20
EU	8	11	13	17	19	23	30	38	47	57
FU	13	13	17	17	19	23	30	38	47	57
KK	M10x1,25	M12x1,25	M14x1,5	M16x1,5	M20x1,5	M27x2	M33x2	M42x2	M48x2	M64x3
LFmin	16	20	25	30	35	45	58	68	92	116
Nmax	17	21	25	30	36	45	55	68	90	110
P	M6	M6	M8	M8	M10	M10	M12	M16	M20	M24





SPINOTTO										
Part.No	P12	P14	P18	P22	P28	P36	P45	P56	P70	P90
EK	10	12	14	20	20	28	36	45	56	70
EL	29	37	45	66	66	87	107	129	149	169